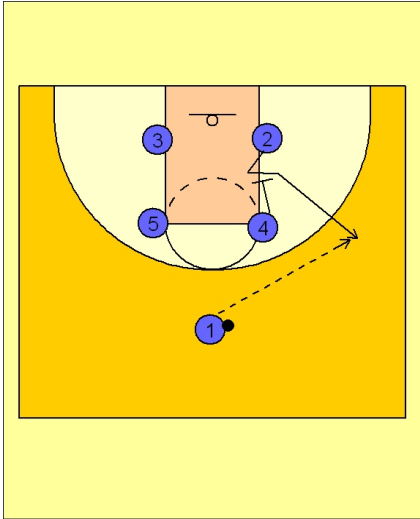




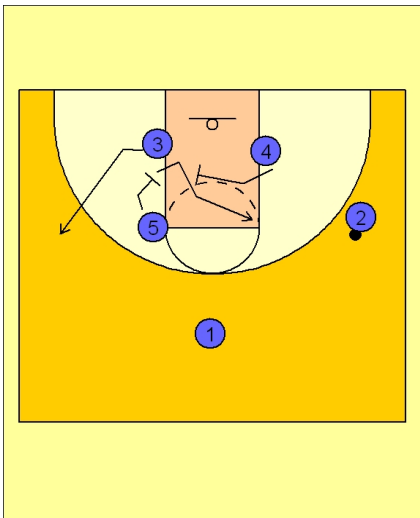
Set play vs. man (10)



Ohio State Set Play vs. Man Defense

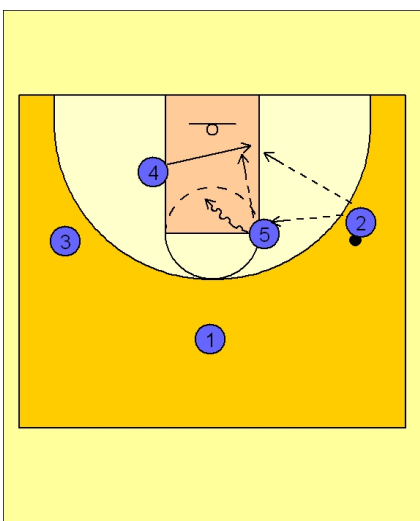
Box set to begin.

#4 down screens for #2 on the right low block. #1 enters the ball to #2 on the right wing.



Ohio State Set Play vs. Man Defense

Once #2 has the ball, #5 down screens for #3. #3 breaks out to the left wing area. #4 comes over and screens for #5. #5 uses the screen to get open in the high post on the ball side.



Ohio State Set Play vs. Man Defense

#2 looks to feed #5 the ball in the high post or he can hit #4 coming across the lane. If #5 receives the ball in the high post he can look to drive the ball to the basket or hit #4 in the post.